

DO NOT SCALE

This drawing has been produced by DLT Engineering in accordance with the instructions of the client for their sole and specific use.

DLT Engineering shall not be liable for the use of any information contained on this drawing for any purpose other than that for which it was specifically prepared and provided.

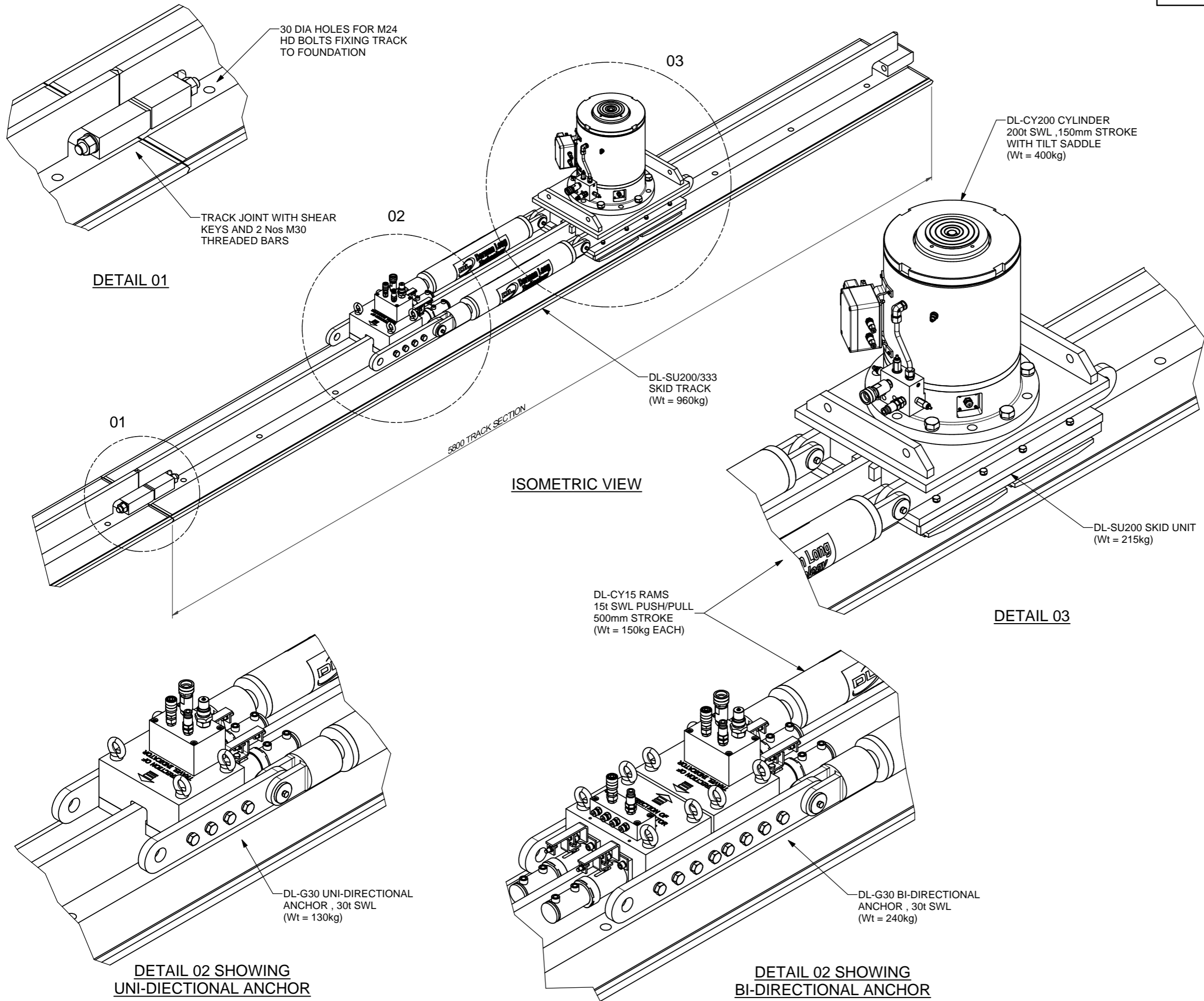
Should there be any doubt regarding the interpretation of any information given on this drawing, enquiries should be directed to DLT Engineering at the address given below before executing such part of the works.

Copyright © DLT Engineering Ltd.

NOTES

SPECIFICATION

| | |
|--------------------------------------|-----------------------|
| VERTICAL LOAD CAPACITY PER SKID UNIT | = 200t |
| MAXIMUM LATERAL LOAD | = 5% |
| MAXIMUM PUSH / PULL PER SKID UNIT | = 30t |
| WORKING PRESSURES (BAR) | |
| VERTICAL | = 280 (PUSH) |
| GRIPPER | = 170/253 (PUSH/PULL) |
| MAXIMUM BEARING PRESSURE UNDER TRACK | = 20MPa |
| LAUNCH SPEED | = 20m/hour |
| CLOSED HEIGHT | = 785mm |
| MAXIMUM LIFT HEIGHT | = 150mm |
| OVERALL CLOSED LENGTH | |
| - UNI-DIRECTIONAL ANCHOR | = 2450mm |
| - BI-DIRECTIONAL ANCHOR | = 2833mm |
| OVERALL WIDTH OF SYSTEM | = 550 mm |



DLT Engineering
International House
Midland Road, Higham Ferrers
Northamptonshire, NN10 8DN
United Kingdom
Tel: +44 (0) 1933 319133
www.dlteng.com

Project
DL-SU200 SKIDDING SYSTEM

Drawing Title
DL-SU200 SKIDDING SYSTEM
GENERAL ARRANGEMENT
ISOMETRIC VIEWS

| | | |
|--|-----------------|------------------|
| | Design Eng: DNT | Checking Eng: MW |
| | Drawn by: JPF | Project Eng: DJD |

| | |
|-------------------------------|-----------------------------------|
| Scales (At A3) AS SHOWN | Drawing Status FOR INFORMATION |
|-------------------------------|-----------------------------------|

| | | |
|---------------------------|--------------|------|
| Original Drawing size: A3 | Drawing No. | Rev. |
| | DL-SU200-001 | N1 |

DO NOT SCALE

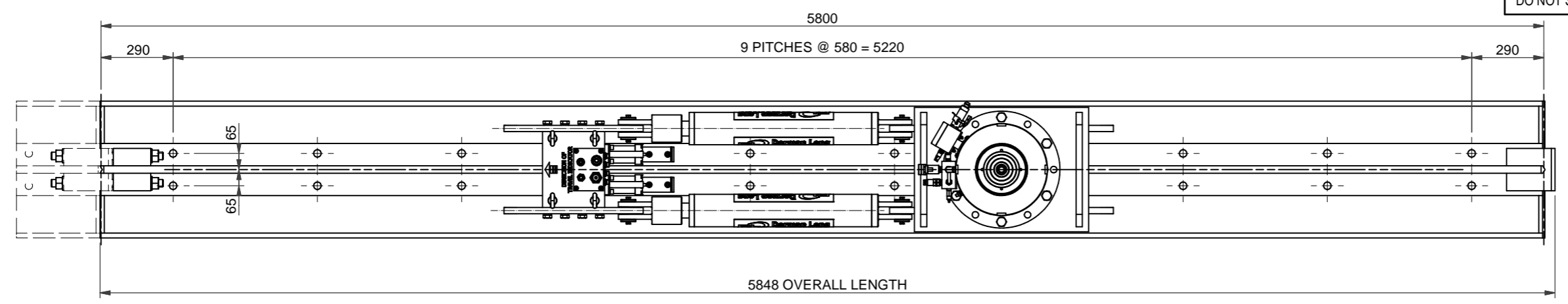
This drawing has been produced by DLT Engineering in accordance with the instructions of the client for their sole and specific use.
 DLT Engineering shall not be liable for the use of any information contained on this drawing for any purpose other than that for which it was specifically prepared and provided.
 Should there be any doubt regarding the interpretation of any information given on this drawing, enquiries should be directed to DLT Engineering at the address given below before executing such part of the works.

Copyright © DLT Engineering Ltd.

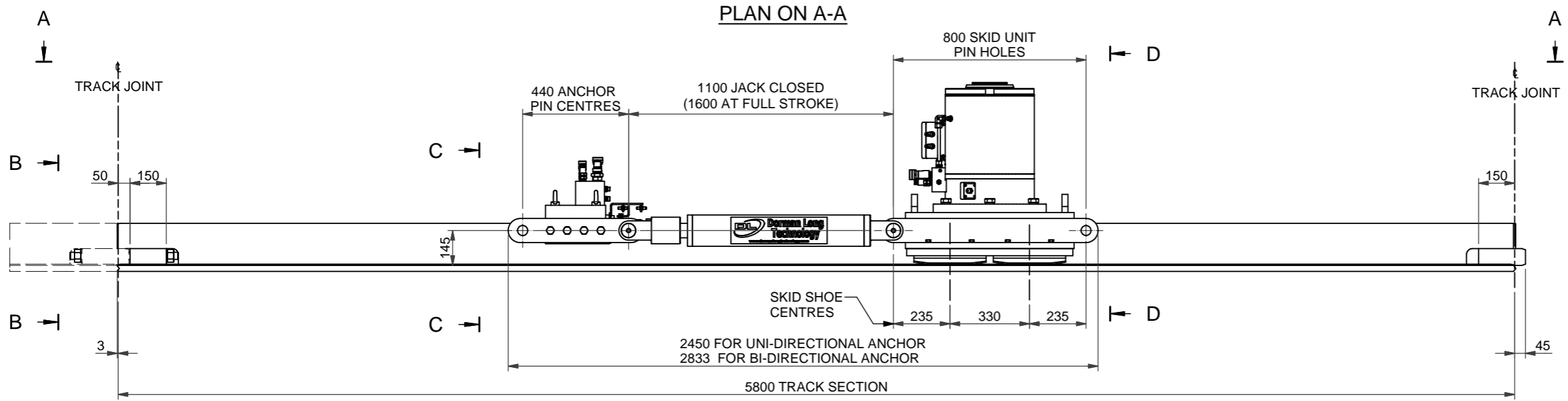
NOTES

SPECIFICATION

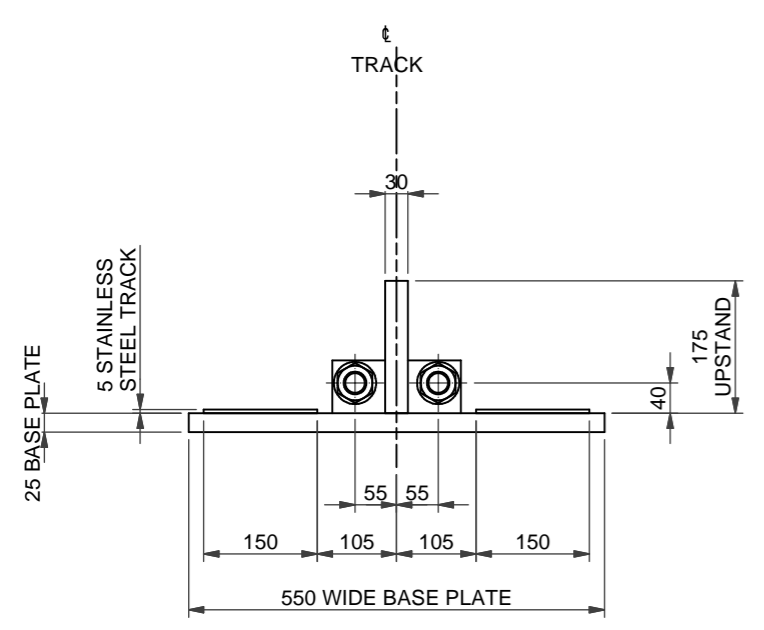
| | |
|--------------------------------------|-----------------------|
| VERTICAL LOAD CAPACITY PER SKID UNIT | = 200t |
| MAXIMUM LATERAL LOAD | = 5% |
| MAXIMUM PUSH / PULL PER SKID UNIT | = 30t |
| WORKING PRESSURES (BAR) | |
| VERTICAL | = 280 (PUSH) |
| GRIPPER | = 170/253 (PUSH/PULL) |
| MAXIMUM BEARING PRESSURE UNDER TRACK | = 20MPa |
| LAUNCH SPEED | = 20m/hour |
| CLOSED HEIGHT | = 785mm |
| MAXIMUM LIFT HEIGHT | = 150mm |
| OVERALL CLOSED LENGTH | |
| - UNI-DIRECTIONAL ANCHOR | = 2450mm |
| - BI-DIRECTIONAL ANCHOR | = 2833mm |
| OVERALL WIDTH OF SYSTEM | = 550 mm |



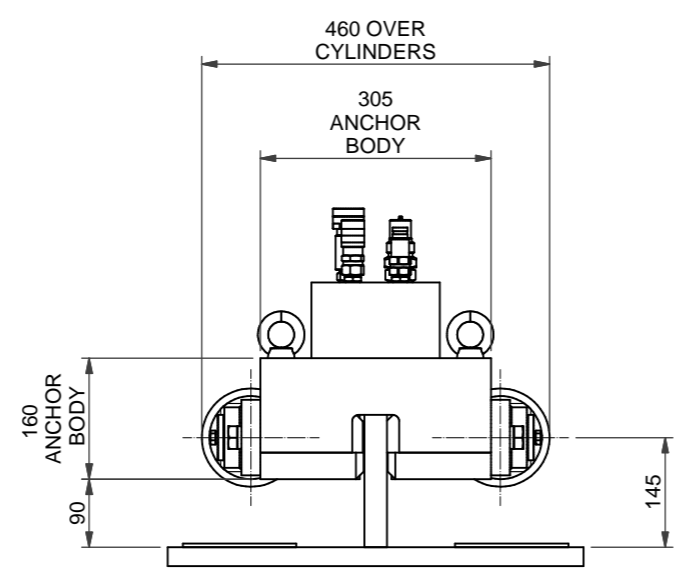
PLAN ON A-A



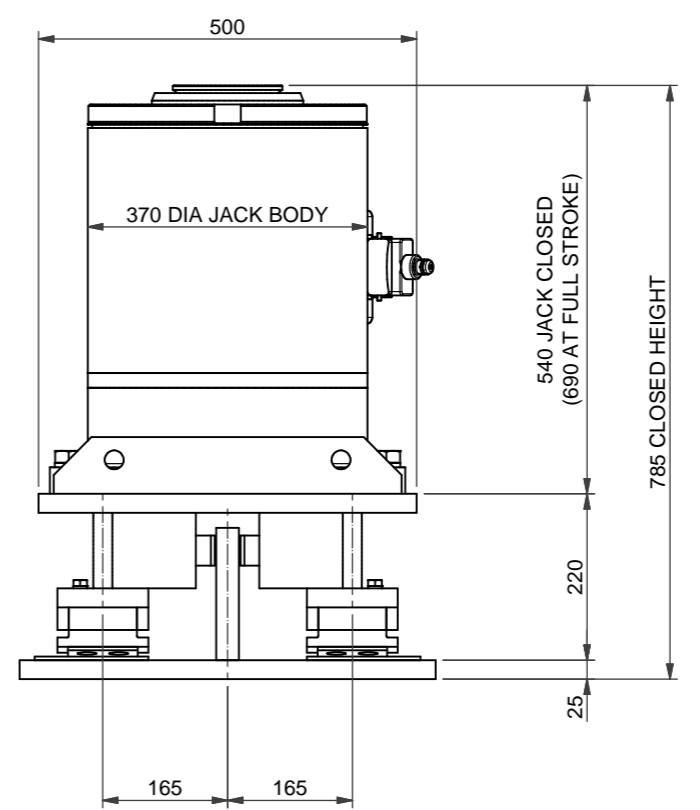
ELEVATION (1:20)



SECTION B-B (1:10)



SECTION C-C (1:10)



SECTION D-D (1:10)

DLT Engineering
 International House
 Midland Road, Higham Ferrers
 Northamptonshire, NN10 8DN
 United Kingdom
 Tel: +44 (0) 1933 319133
 www.dlteng.com

Project
DL-SU200 SKIDDING SYSTEM

Drawing Title
**DL-SU200 SKIDDING SYSTEM
 GENERAL ARRANGEMENT
 PLANS AND SECTIONS**

| | | |
|----------------------------|--|------------------|
| | Design Eng: DNT | Checking Eng: MW |
| | Drawn by: JPF | Project Eng: DJD |
| Scales (At A3) AS SHOWN | Drawing Status FOR INFORMATION | |

Drawing No. **DL-SU200-002** Rev. **N1**