

DO NOT SCALE

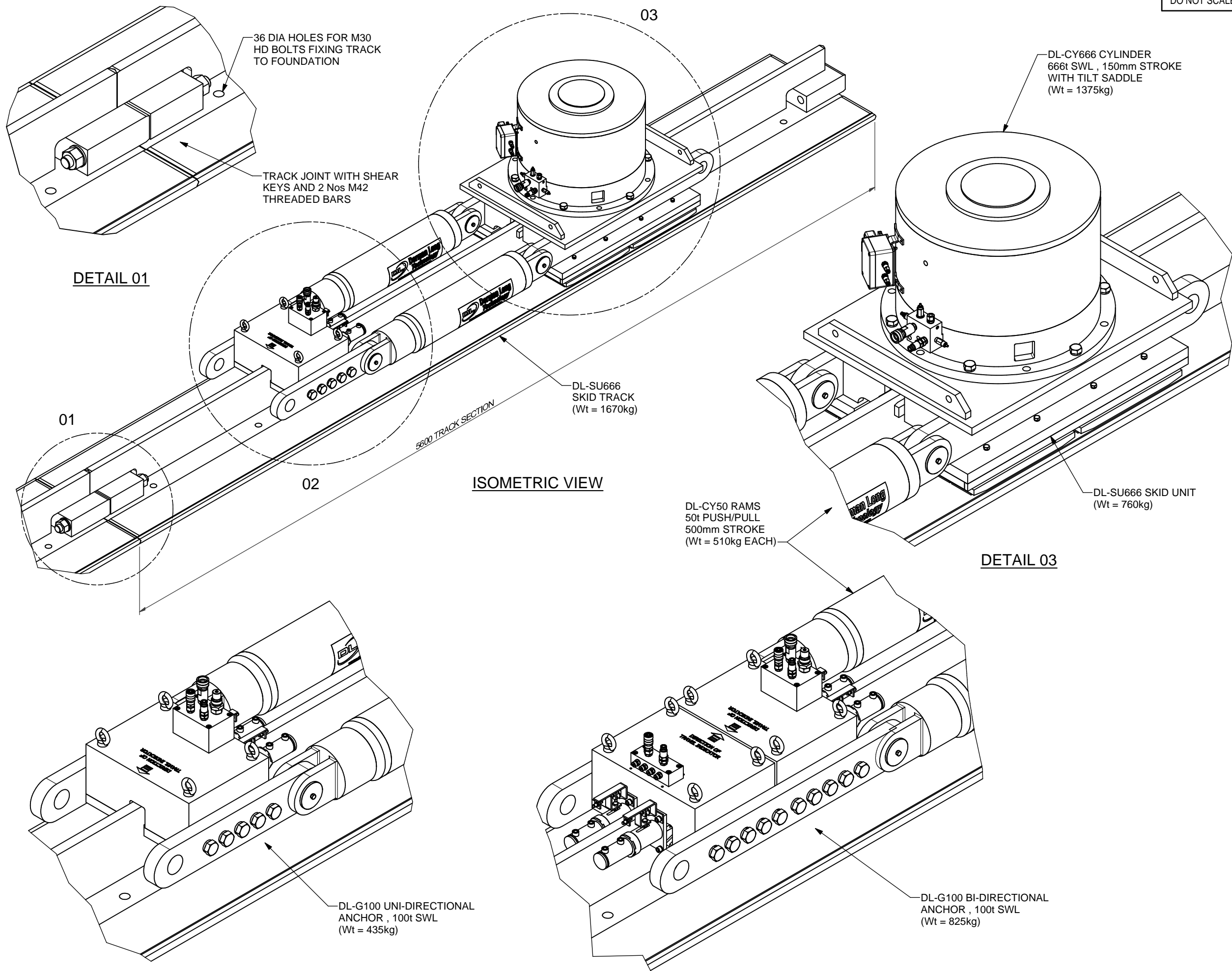
This drawing has been produced by DLT Engineering in accordance with the instructions of the client for their sole and specific use.
DLT Engineering shall not be liable for the use of any information contained on this drawing for any purpose other than that for which it was specifically prepared and provided.
Should there be any doubt regarding the interpretation of any information given on this drawing, enquiries should be directed to DLT Engineering at the address given below before executing such part of the works.

Copyright © DLT Engineering Ltd.

NOTES

SPECIFICATION

VERTICAL LOAD CAPACITY PER SKID UNIT	= 666t
MAXIMUM LATERAL LOAD	= 5%
MAXIMUM PUSH / PULL PER SKID UNIT	= 100t
WORKING PRESSURES (BAR)	
VERTICAL	= 275 (PUSH)
GRIPPER	= 193/279 (PUSH/PULL)
MAXIMUM BEARING PRESSURE UNDER TRACK	= 20MPa
LAUNCH SPEED	= 20m/hour
CLOSED HEIGHT	= 890mm
MAXIMUM LIFT HEIGHT	= 150mm
OVERALL CLOSED LENGTH	
- UNI-DIRECTIONAL ANCHOR	= 3325mm
- BI-DIRECTIONAL ANCHOR	= 3778mm
OVERALL WIDTH OF SYSTEM	= 800 mm



DETAIL 01

ISOMETRIC VIEW

DETAIL 03

DETAIL 02 SHOWING UNI-DIRECTIONAL ANCHOR

DETAIL 02 SHOWING BI-DIRECTIONAL ANCHOR

A	11.04.13	INF	INFORMATION	JPF	DNT
Rev	Date	Status	Description	By	Chkd

DLT Engineering
International House
Midland Road, Higham Ferrers
Northamptonshire, NN10 8DN
United Kingdom
Tel: +44 (0) 1933 319133
www.dlteng.com

Project
DL-SU666 SKIDDING SYSTEM

Drawing Title
DL-SU666 SKIDDING SYSTEM
GENERAL ARRANGEMENT
ISOMETRIC VIEWS

Design Eng:	DNT	Checking Eng:	MW
Drawn by:	JPF	Project Eng:	DJD

Scales (At A3)	AS SHOWN	Drawing Status	FOR INFORMATION
Original Drawing size:	A3	Drawing No.	DL-SU666-001

Drawing No.	DL-SU666-001	Rev.	N1
-------------	--------------	------	----

DO NOT SCALE

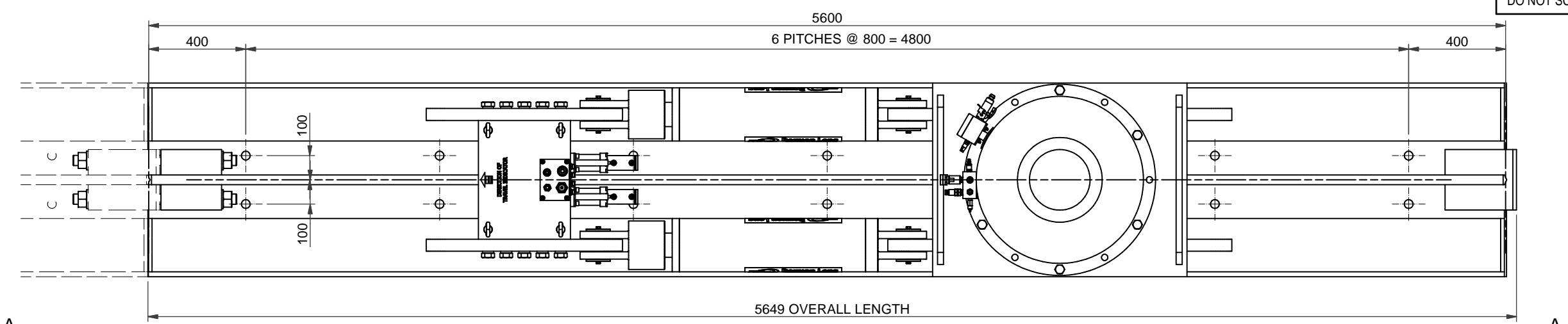
This drawing has been produced by DLT Engineering in accordance with the instructions of the client for their sole and specific use.
DLT Engineering shall not be liable for the use of any information contained on this drawing for any purpose other than that for which it was specifically prepared and provided.
Should there be any doubt regarding the interpretation of any information given on this drawing, enquiries should be directed to DLT Engineering at the address given below before executing such part of the works.

Copyright © DLT Engineering Ltd.

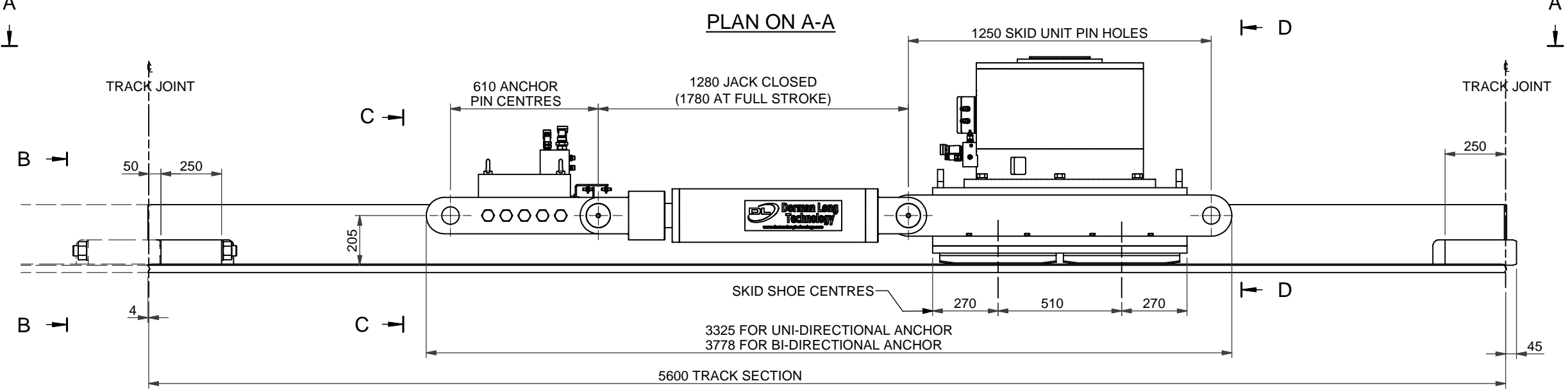
NOTES

SPECIFICATION

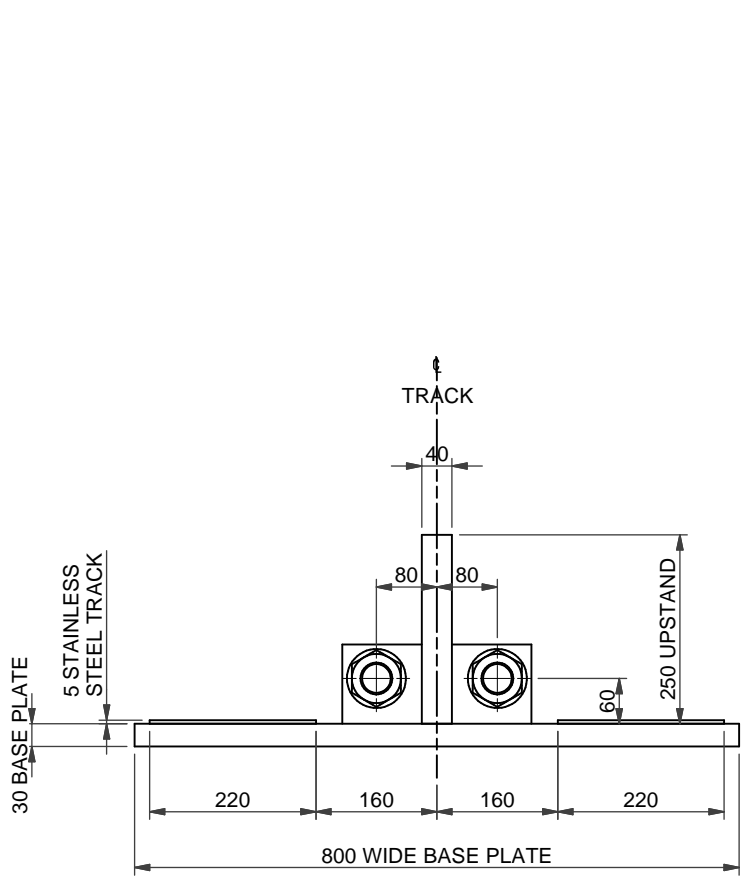
VERTICAL LOAD CAPACITY PER SKID UNIT	= 666t
MAXIMUM LATERAL LOAD	= 5%
MAXIMUM PUSH / PULL PER SKID UNIT	= 100t
WORKING PRESSURES (BAR)	
VERTICAL	= 275 (PUSH)
GRIPPER	= 193/279 (PUSH/PULL)
MAXIMUM BEARING PRESSURE UNDER TRACK	= 20MPa
LAUNCH SPEED	= 20m/hour
CLOSED HEIGHT	= 890mm
MAXIMUM LIFT HEIGHT	= 150mm
OVERALL CLOSED LENGTH	
- UNI-DIRECTIONAL ANCHOR	= 3325mm
- BI-DIRECTIONAL ANCHOR	= 3778mm
OVERALL WIDTH OF SYSTEM	= 800 mm



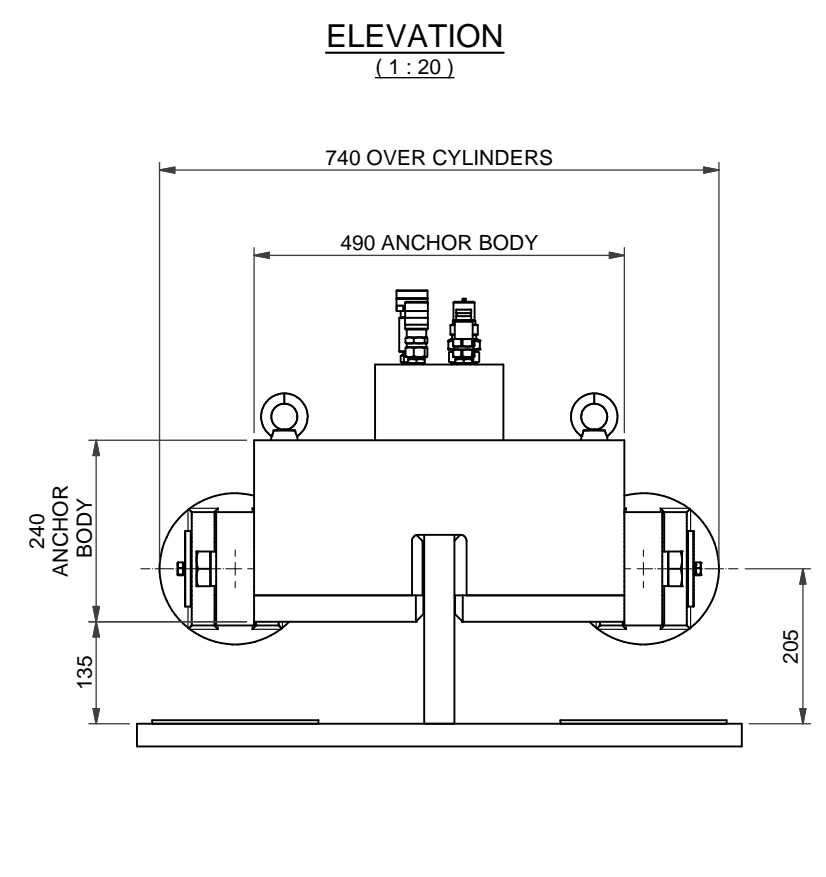
PLAN ON A-A



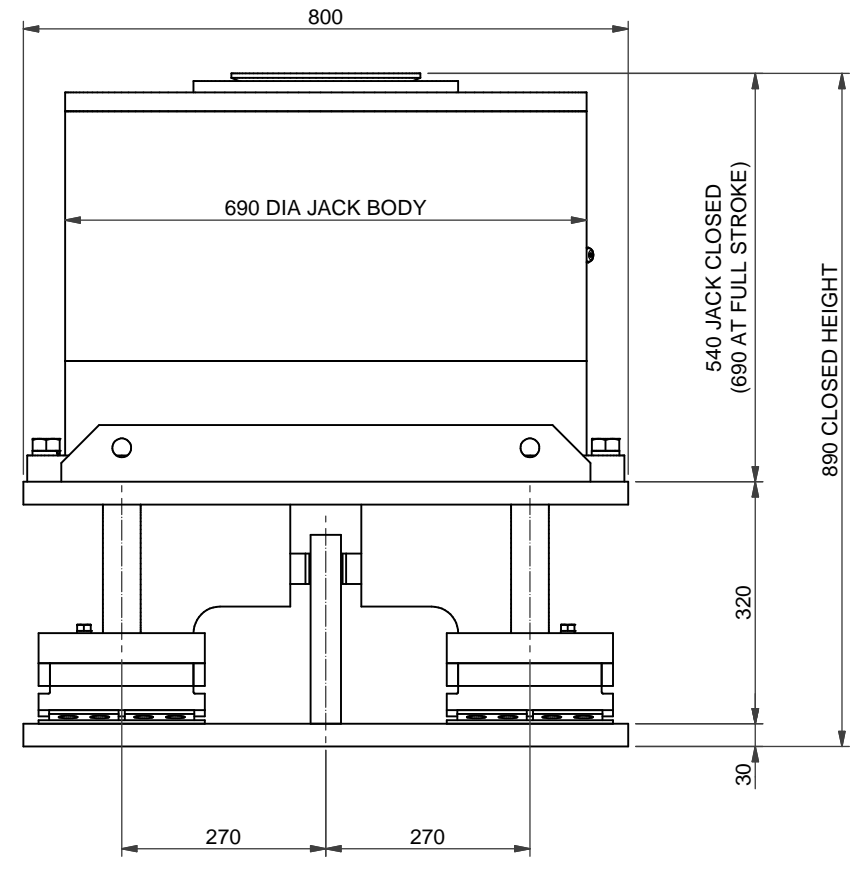
ELEVATION (1:20)



SECTION B-B (1:10)



SECTION C-C (1:10)



SECTION D-D (1:10)

DLT Engineering
International House
Midland Road, Higham Ferrers
Northamptonshire, NN10 8DN
United Kingdom
Tel: +44 (0) 1933 319133
www.dlteng.com

Project
DL-SU666 SKIDDING SYSTEM

Drawing Title
DL-SU666 SKIDDING SYSTEM
GENERAL ARRANGEMENT
PLANS AND ELEVATIONS

Design Eng:	DNT	Checking Eng:	MW
Drawn by:	JPF	Project Eng:	DJD
Drawing Status	FOR INFORMATION		

Original Drawing size: A3
Drawing No.
DL-SU666-002

Rev.
N1